

GEOMATICS



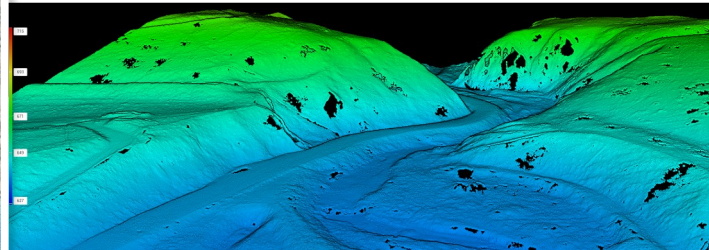
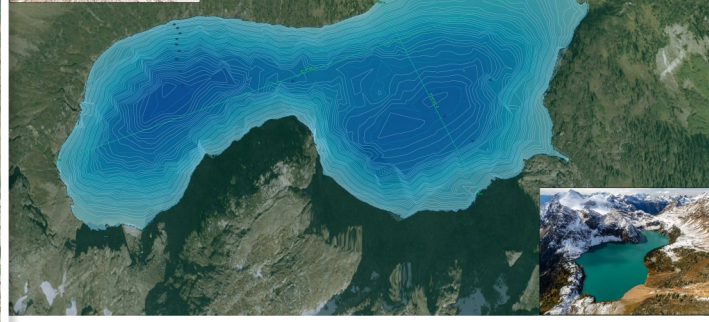
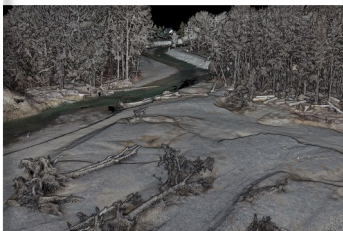
Ecoscape has a strong reputation for providing advanced Geographical Information System (GIS) services. Our experience in these applications has been demonstrated across all service sectors. Our GIS and mapping service is applied to the majority of projects undertaken by Ecoscape and plays a key role in the successful delivery of environmental management solutions. We understand the widespread potential of GIS and the availability of mapping information. When applied effectively, it is an integral component to the successful completion of our projects.

Ecoscape utilizes a suite of equipment that allows us to complete almost any survey. Our equipment includes traditional survey grade total stations, decimeter level mapping GPS's, GNSS Receivers for base stations, RTK surveying, and professional grade drones. Ecoscape also utilizes single and multi-beam transducers for bathymetric surveying with all types of survey methods in addition to laser scanning.

Quality In-house Services include:

- Bathymetric Surveys (single beam and multibeam)
- Topographic Surveys
- Licensed Drone Surveys for Aerial Imaging, Thermal (Infrared), and LiDAR surveys
- Site Surveys
- Stockpile and Volumetric Surveying
- Fish Passage Assessments of Closed Bottom Structures
- Tributary Migration Access surveys
- Topographic Change Monitoring
- Laser Scanning

SERVICES



#2-2030 Matrix Cr., Kelowna, British Columbia, Canada V1V 0G5
Phone: 250-491-7337

www.ecoscapeltd.com